

Post Details		Last Updated: 02/06/2026	
Faculty/Administrative/Service Department:	Faculty of Engineering & Physical Sciences (FEPS) Advanced Technology Institute (ATI)		
Job Title:	Research Technician (Cleanroom)		
Job Family & Job Level	Technical and Experimental	Level 3	
Responsible to:	ATI Cleanroom & Laboratories Manager		
Responsible for:	n/a		
<u>Job Purpose Statement</u>			
<p>To provide high-quality technical support for research activities and to maintain high standards of health and safety within the Cleanroom and associated laboratories (incl. Plasma Laboratory, Electron Microscopy Facility, Nano-OPS Laboratory, Scaled Printing Laboratory). Broader contributions to the technical expertise and support across the School and Faculty may be called upon when required.</p> <p>You will support the upkeep and reliable operation of equipment, monitor and maintain stock and consumable levels, and manage waste disposal in these laboratories as required. Key responsibilities include assisting with the maintenance and operation of complex equipment and services used in the fabrication and testing of electronic, photonic and energy-harvesting devices; implementing, maintaining and monitoring health and safety regulations in all relevant laboratories, including compliance with CoSHH requirements, PAT testing, waste disposal procedures and record keeping.</p> <p>Through the effective delivery of these activities, the post holder will contribute to a positive experience for both students and staff. The role will include working closely with the management of the Cleanroom of NPL, that may include offsite work.</p>			
<u>Problem Solving, Accountability and Dimensions of the role</u>			
<p>The post holder will use their skills and technical knowledge to repair, maintain and carry out planned servicing of processing equipment. When required, they will also perform processing and measurement of samples under guidance. The role includes providing operational support to labs that include the cleanroom, plasma laboratory, SEM laboratory, nano-OPS laboratory, scaled-printing laboratory, working collaboratively with colleagues to resolve technical and operational issues.</p> <p>The post holder will be responsible for maintaining a high standard of housekeeping in all laboratories and for ensuring that experimental facilities are well maintained. They will contribute to enhancing user experience and process performance, working closely with researchers to improve the reliability and efficiency of processes. The post holder will use their experience and judgement to resolve complex problems and will contribute to the development of techniques and methods in support of agreed research programmes.</p> <p>The post holder will follow, implement, maintain and monitor all relevant health and safety regulations in the laboratories, ensuring compliance with CoSHH requirements and adherence to risk assessments, and will highlight and address any issues identified. They will also implement and maintain appropriate record-keeping practices and established procedures. The post holder will be responsible for ensuring staff and students meet health and safety requirements and CoSHH regulations. The post holder will also monitor and maintain stock levels of consumables within designated laboratories.</p> <p>All relevant training for the post will be provided as required.</p>			
<u>Background Information/Relationships</u>			
<p>The ATI is a multidisciplinary research centre that sits within the School of Computer Science and Electronic Engineering, with around 120 researchers. Many of these will be performing experimental work using high specification equipment and hazardous substances.</p> <p>The post holder will have contact typically with:</p>			

- ATI staff and students
- Faculty workshops
- External companies and institutions
- External contractors and service engineers
- Estates and Facilities Management
- Central Stores
- Interdepartmental

This Job Purpose reflects the core activities of the post. As the Department/Faculty and the post holder develop, there will inevitably be some changes to the duties for which the post is responsible, and possibly to the emphasis of the post itself. The University expects that the post holder will recognise this and will adopt a flexible approach to work. This could include undertaking relevant training where necessary.

Should significant changes to the Job Purpose become necessary, the post holder will be consulted and the changes reflected in a revised Job Purpose.

Person Specification This section describes the sum total of knowledge, experience & competence required by the post holder that is necessary for standard acceptable performance in carrying out this role.

Qualifications and Professional Memberships	Essential/ Desirable	
Degree, HND, NVQ 4 qualified in a relevant specialist subject	E	
Technical Competencies (Experience and Knowledge) This section contains the level of competency required to carry out the role (please refer to the competency framework for clarification where needed and the Job Families Booklet).	Essential/ Desirable	Level 1-3
Knowledge and experience of electronic device fabrication in a comparable clean room environment or equivalent	E	3
Knowledge/Experience of high vacuum systems	E	3
Ability to use light mechanical machines and hand tools	E	2
Ability to fault diagnose and repair electrical systems and circuits	E	2
Ability to work independently within the framework of the requirements of the post.	E	2
Understanding of relevant CoSHH and Health and Safety legislation and issues	D	2
Knowledge/Experience of working with hazardous gases	D	2
Knowledge/Experience of Semiconductor sample handling	D	2
Special Requirements:	Essential/ Desirable	Level 1-3
n/a		
Core Competencies This section contains the level of competency required to carry out this role. (Please refer to the competency framework for clarification where needed). N/A (not applicable) should be placed, where the competency is not a requirement of the grade.	Level 1-3	
Communication	3	
Adaptability / Flexibility	2	
Customer/Client service and support	2	
Planning and Organising	2	
Teamwork	2	
Continuous Improvement	2	
Problem Solving and Decision Making Skills	2	
Leadership / Management	N/A	
Creative and Analytical Thinking	1	
Influencing, Persuasion and Negotiation Skills	2	

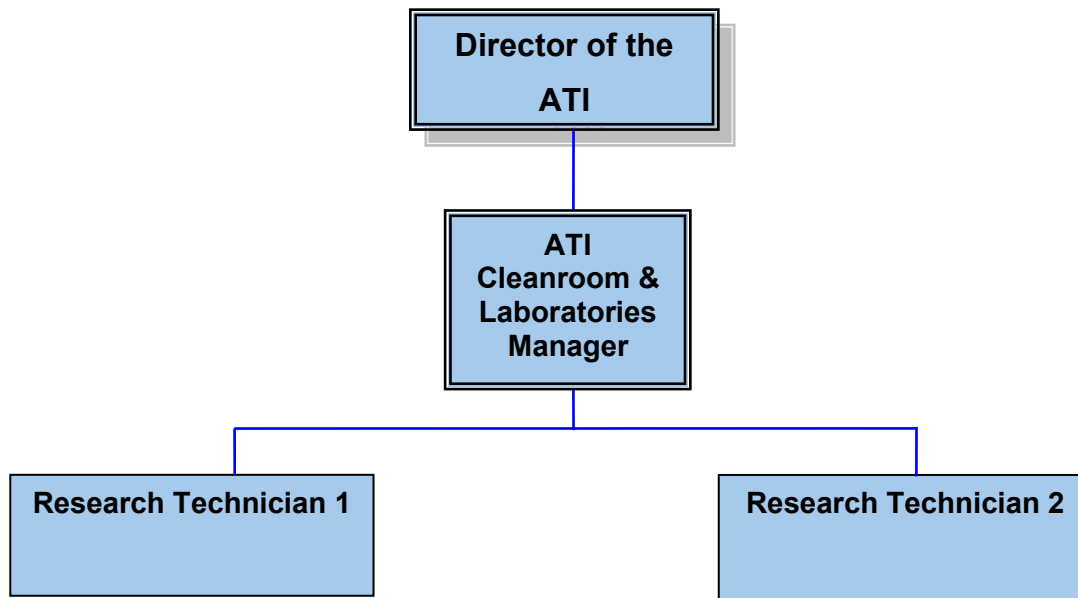
Organisational Information

All staff are expected to:

- Positively support equality of opportunity and equity of treatment to colleagues and students in accordance with the University of Surrey Equal Opportunities Policy.
- Work to achieve the aims of our Environmental Policy and promote awareness to colleagues and students.
- Follow University/departmental policies and working practices in ensuring that no breaches of information security result from their actions.
- Ensure they are aware of and abide by all relevant University Regulations and Policies relevant to the role.
- Undertake such other duties within the scope of the post as may be requested by your manager.
- Work supportively with colleagues, operating in a collegiate manner at all times.

Help maintain a safe working environment by:

- Attending training in Health and Safety requirements as necessary, both on appointment and as changes in duties and techniques demand.
- Following local codes of safe working practices and the University of Surrey Health and Safety Policy.



Key Responsibilities

This document is not designed to be a list of all tasks undertaken but an outline record of the main responsibilities (5 to 8 maximum) and should be read in conjunction with the accompanying Job Purpose.

1. Provide high quality and professional technical support to customers and users of the ATI cleanroom and associated laboratories. Other laboratories include plasma lab, SEM lab, Nano-OPS lab, Scaled Printing Lab.
2. Ensure that high quality service is provided to the user community.
3. Regularly maintain, service and repair laboratory equipment.
4. Regularly assess the status of personal protective equipment (PPE) within these labs, report issues and replace as necessary.
5. Assist in the fabrication and/or testing of electronic and photonic devices for internal and external customers.
6. Assist in ensuring installations and services are safe and in compliance with Health and Safety regulations taking a lead in maintaining day-to-day safety and security of laboratory space and equipment.
7. Maintain documentation and records, including CoSHH forms, risk assessments and Portable Appliance Testing (PAT), and stock checking of chemicals and consumables.
8. Ensure users use the appropriate waste-stream for waste disposal, and manage the disposal of waste.
9. Support colleagues in the team to ensure all the ATI's facilities provide the best possible user experience.

N.B. The above list is not exhaustive.